



FOBA C.0102/C.0302

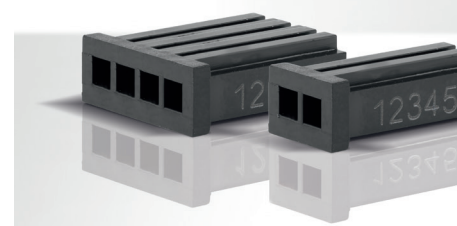
Reliable, field-proven CO₂ laser marking technology combined with unrivalled flexibility

Wavelengths, scan head aperture, marking head position, IP rating, power and much more can be configured to suit your application needs. Flexibility is built-in. With print speeds up to 2,000 characters/sec. and line speeds up to 900 m/min., these marking lasers address both simple and complex code requirements on a range of substrates including paperboard, glass, painted metals and many plastic materials. This flexibility makes the C-Series lasers well suited for laser marking applications in various industries: for automotive parts, electronic components, plastic parts, cables, and many more. Marking your products on-the-fly or when stationary, with simple date codes or complex graphics, the C.0102 and C.0302 offer cost effective solutions to your part marking challenges.

The C.0102 10-Watt offers all the performance features the C.0302 30-Watt marking laser provides, but with a power source better matched for moderate line speed applications or those at rest. The 30-Watt C.0302 is perfect for higher speed mark-on-the-fly applications (of up to 150,000 products/hour) or more demanding materials such as many plastics.

Your product benefits

- **Reliability:** Air-cooled laser virtually eliminates maintenance intervals; High resolution marking head for high quality, permanent and consistently crisp codes that assure product traceability and tamper-proofing.
- **Built-in productivity:** A variety of mark window options and high-speed marking heads allow for a throughput increase of up to 67%.
- **Simple usability:** Most flexible integration solution with 32 standard beam delivery options; Quick set up and easy redeployment via detachable umbilical cable and simple-to-use accessory connections; 4 interface options plus a choice of networking communications to match your preferred workflow.



Auto cuff: marking rubber; PCB plate: material removal; Connectors: engraving/color change



FOBA C.0102/C.0302

Technical Data

FOBA®
Laser at your service

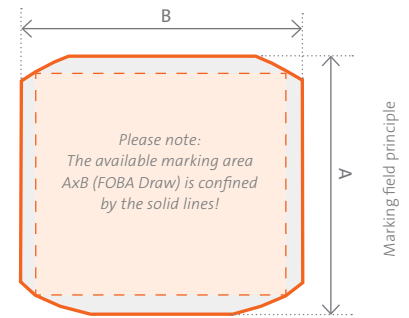
Marking features

Marking heads and focusing

- 6 mm head with 5 focus lenses (f=64/95/127/191/245 mm)
- 10/12/15 mm heads (optional) with various focus lenses (10/12 mm: f=63.5/85/100/150/200/300/351/400 mm, 15 mm: f=400/500/600 mm)

Marking fields (mm²)

- 6 mm head: from (AxB) 44.7x44.7 to 177.3x177.3
- 10 mm head: from (AxB) 30.8x38.2 to 294.7x406.9
- 12 mm head: from (AxB) 29.1x36.2 to 294.7x350.8
- 15 mm head: from (AxB) 66.7x100.1 to 439.8x601.0



Laser

Type

Sealed CO₂ laser, power class 10/30-Watt
Wavelengths 9.3/10.2 and 10.6 µm

Laser class

4 (acc. to IEC 60825-1)

User interfaces

Handheld controller

PC software

FOBA Draw, MarkUS 2.12 (as of Q2.2018)

Smart Graph Com Interfaces

Active X interface
Ethernet (TCP/IP), RS232 optional; Inputs for encoders and product detector triggers; inputs/outputs for start/stop signals, machine/operator interlocks, alarm outputs; additional I/Os available

Integration

Machine safety

Optional safety module for Performance Level d (PL d) in accordance with EN 13849-1

Line integration

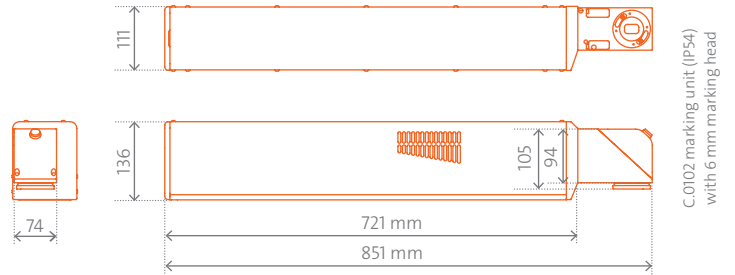
Direct integration via scripting interface

Beam delivery

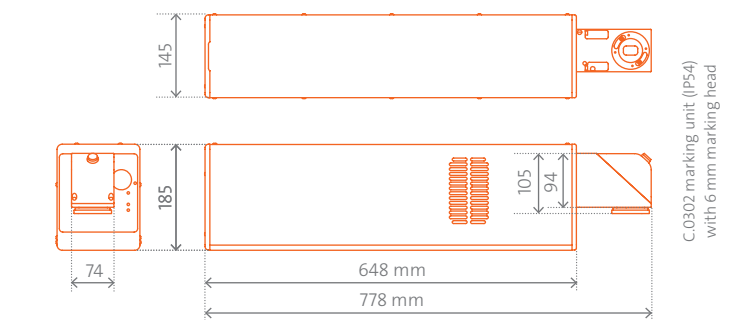
32 standard beam delivery options (beam extension unit/turning unit)

Quick connect

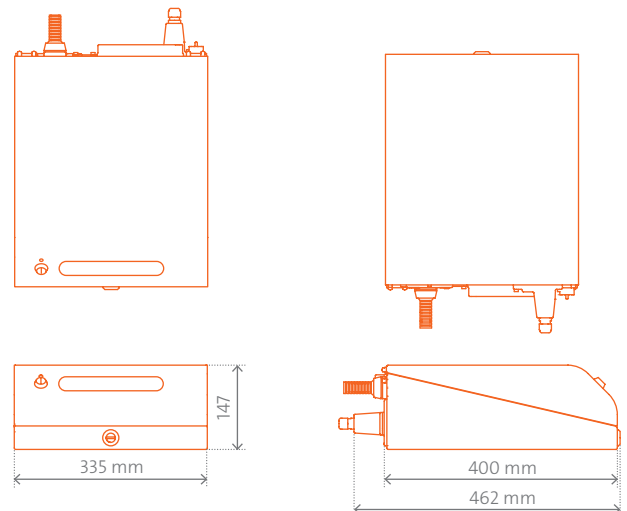
Detachable umbilical for simple integration; available in 3 lengths



C.0102 marking unit (IP54) with 6 mm marking head



C.0302 marking unit (IP54) with 6 mm marking head



IP54 Supply unit

Supply

Electrical req.

L/N/PE 100–240 VAC, 50/60 Hz

Power consumption

C.0102: max. 0.4 kW, C.0302: max. 0.7 kW

IP rating

- Marking unit: IP54 (optional IP65)
- Supply unit: IP54 (optional IP65)

Cooling

Air-cooled

Temp./Humidity

5–40 °C / 10 %–90 %, non-condensing

Weight

- Marking unit C.0102 (IP54) ~13 kg
- Marking unit C.0302 (IP54) ~19.1 kg
- Supply unit (IP54) approx. 11.5 kg

Applicable Certifications

CE, TÜV/NRTL, FCC | RoHS compliant

*Depends on marking head and focus lens

ALLTEC GmbH

An der Trave 27-31

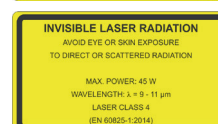
23923 Selmsdorf | Germany

T +49 38823 55-0 | T (US) +1 630 694-3243

F +49 38823 55-222

info@fobalaser.com | www.fobalaser.com

© 2017 ALLTEC GmbH – All rights reserved.
Specification subject to change without notice. C.0102-C.0302_EN_12.17



Solution Partner
Alitec GmbH

